

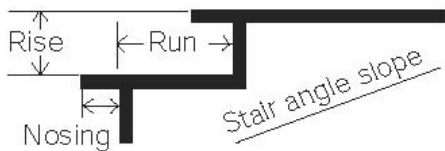
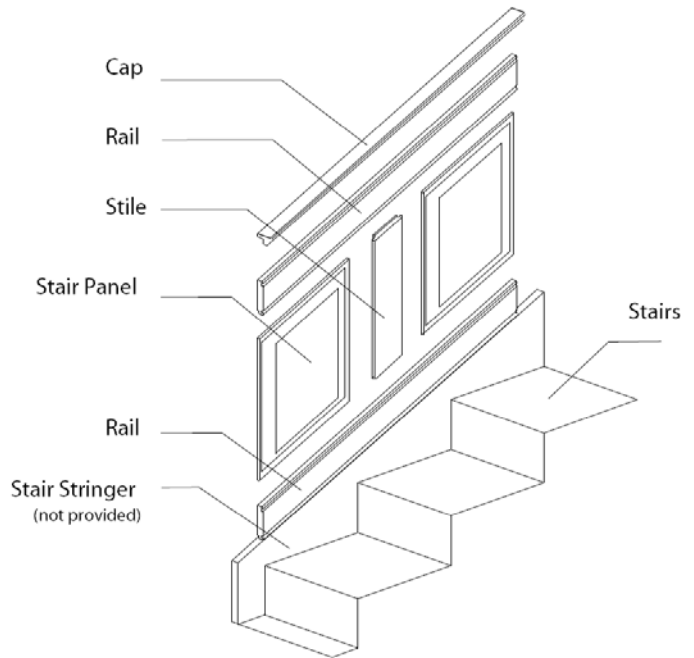
Classic American®

Stair PanelSet®

New England Classic® introduces the Classic American® Stair PanelSet®. The American Arts and Crafts, Mission and Shaker architectural styles are now available in the New England Classic® patented wainscot system.

Match you stair angle to our standard panel chart below and select the closest unit rise and run (treads less nosing) dimension to your stair. We can also provide custom panels for your application.

Send your completed design service request form to our experience design professionals, and we will send you a custom design, with material list within five business days, for most applications.



		RUN (TREAD LENGTH LESS NOSING)							
		9"	9-1/4"	9-1/2"	9-3/4"	10"	10-1/4"	10-1/2"	10-3/4"
RISE HEIGHT	6-3/4"	36.9°	36.1°	35.4°					
	7"	37.9°	37.1°	36.4°	35.7°				
	7-1/4"	38.9°	38.1°	37.3°	36.6°	35.9°			
	7-1/2"	39.0°	39.0°	38.3°	37.6°	36.9°	36.2°	35.5°	
	7-3/4"	40.7°	40.0°	39.2°	38.5°	37.8°	37.1°	36.4°	35.8°
	8"	41.6°	40.9°	40.1°	39.4°	38.7°	38.0°	37.3°	36.7°
	8-1/4"	42.5°	41.7°	41.0°	40.2°	39.5°	38.8°	38.2°	37.5°
	8-1/2"		42.6°	41.8°	41.1°	40.4°	39.7°	39.0°	38.3°

Guidelines for measuring stairs

- Measure the stairs using the guidelines below and fill out the table.
Note: Please include plan dimensions of any landings connected to stairs.
- Take the completed form to a Sales Associate for forwarding. You can also fax the form directly to us at: **931-268-4541**. You should have your Free Design and suggested material list within two to five business days.
- Contact our Customer Service department if you have questions or need assistance.
Toll Free: **888-460-6324** e-mail: customerservice@newenglandclassic.com.

<p>Step 1: Looking upward from the bottom of the stair, determine if the panels will go on the right or left side.</p> <p>Step 2: Measure tread width to the nearest 1/8".</p> <p>Step 3: Measure riser height to the nearest 1/8".</p> <p>Step 4: Measure overhang/nosing to the nearest 1/8".</p> <p>Step 5: Measure the diagonal length of the finish stringer in inches.</p> <p>Step 6: Measure the height of finish stringer (top and bottom).</p> <p>Step 7: Please include the number of risers in the stairs.</p> <p>Note: Please measure more than three steps and choose the most common measurement for the chart (steps 2, 3, 4)</p>	1. Stair Type (circle)	L R	
	2. Tread width		
	3. Riser height		
	4. Overhang/nosing		
	5. Diagonal length of stringer		
		top	bottom
	6. Height of finish stringer		
7. Number of risers			

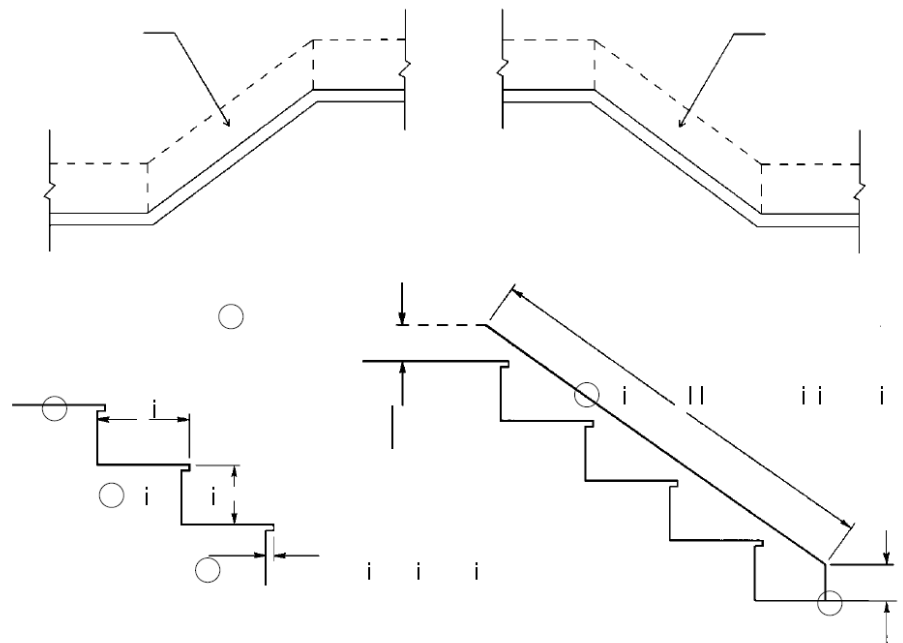
Left Side Application

Right Side Application



What better walls are wearing®

New England Classic®
 4145 Parkway Drive
 Florence, AL 35630
www.newenglandclassic.com
design@newenglandclassic.com
 T: 888-460-6324
 F: 256-767-2916



For more information regarding the New England Classic® Panel Systems product offerings please visit our web site at www.newenglandclassic.com